



DUCT ACCESS DOOR Model KHD (Hinged)



DATE

SPECIFICATIONS

GENERAL SCOPE:

Access doors shall be Karp Type KHD (Hinged) and Type KCD (No Hinge) as manufactured by Karp Associates, Inc., Melville, N.Y.
Sizes shall be as indicated on the drawings.

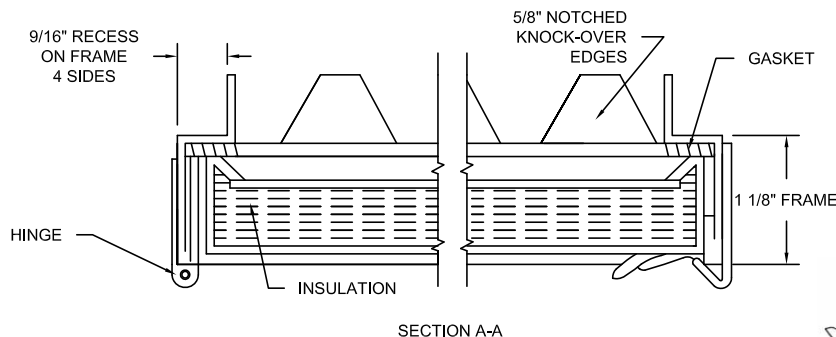
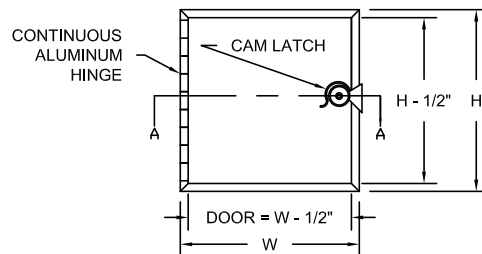
CONSTRUCTION:

1. a. On door sizes of 12 x 12 inches and smaller, door shall be 24 gage galvanized steel.
- b. On door sizes of 14 x 14 inches and larger, door shall be 22 gage galvanized steel.
2. Frame shall be 22 gage galvanized steel.
3. Hinge shall be aluminum, continuous piano.
4. Door shall be filled with 2" thick fiberglass insulation compressed into 1". R factor = 7.7
5. Gasketing between door and frame shall be 1/2" thick by 1/8" wide closed cell neoprene gasketing.
6. Cam latches shall be zinc plated steel - self-tightening and hand operated.
7. Back of frame to have 5/8" notched knock-over edges.

STANDARD SIZES

DOOR SIZE H X W (INCHES)	ACTUAL DOOR MEASUREMENTS (INCHES)	DUCT OPENING (INCHES)	CAMS	SHIP WT. (LBS.)
6 x 6	5 1/2 x 5 1/2	4 3/4 x 4 3/4	1	1.1
8 x 8	7 1/2 x 7 1/2	6 3/4 x 6 3/4	1	1.8
10 x 10	9 1/2 x 9 1/2	8 3/4 x 8 3/4	1	2.4
12 x 12	11 1/2 x 11 1/2	10 3/4 x 10 3/4	1	3.2
14 x 14	13 1/2 x 13 1/2	12 3/4 x 12 3/4	2	4.9
16 x 16	15 1/2 x 15 1/2	14 3/4 x 14 3/4	2	5.5
18 x 18	17 1/2 x 17 1/2	16 3/4 x 16 3/4	2	6.6
24 x 24	23 1/2 x 23 1/2	22 3/4 x 22 3/4	2	11.0

PROJECT DATA					
Project Name:					
Architect:					
Contractor:					
Agent/Customer Name:					
Tagging Instructions:					
Special Instructions:					
PROJECT SCHEDULE					
Qty.	H	W	No. of Latches	Finish	Remarks



Made with Union Labor



FOR MORE INFORMATION CALL 1-888-926-1365
 Superior Specialty Supply • 9 Council Drive • PO Box 417 • Woodsboro, MD 21798 • www.sssupply.com