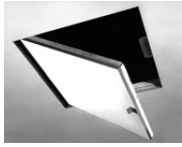




SESAME ACCESS DOOR MODEL KSTDW For Drywall Ceilings



DATE

SPECIFICATIONS

GENERAL SCOPE:

Access doors shall be Karp Type KSTDW as manufactured by Karp Associates, Inc., Melville, N.Y. Sizes shall be as indicated on the drawings.

CONSTRUCTION:

1. Frame shall be 20 gage galvanized steel.
2. Door shall be 20 gage galvanized steel and shall be lined with 3/8" mineral fiberboard.
3. Gasketing shall be flame retardant polyurethane.
4. Locks shall have plastic grommets and shall be square head key wrench operated.
5. Hinge shall be concealed pivot with a controlled action device (CAD), except for size 12" x 12".

STANDARD SIZES

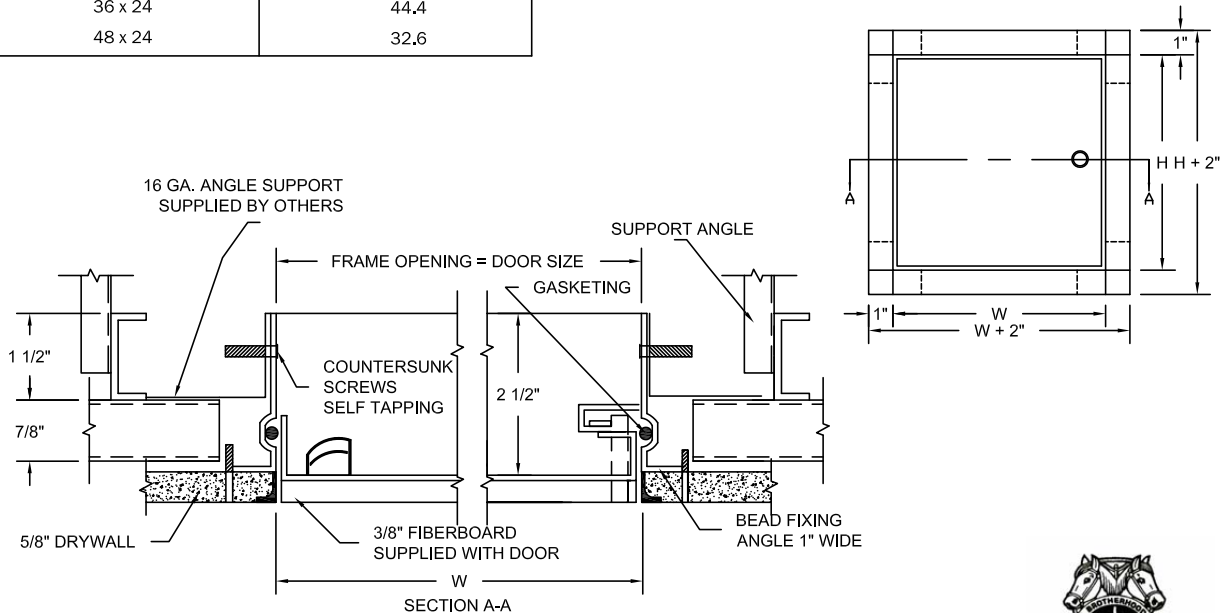
| DOOR SIZE H x W (INCHES) | SHIPPING WT. (LBS.) |
|-----------------------------|---------------------|
| 12 x 12 | 8.2 |
| 18 x 18 | 16.7 |
| 24 x 24 | 17.6 |
| 36 x 24 | 44.4 |
| 48 x 24 | 32.6 |

PROJECT DATA

| |
|-----------------------|
| Project Name: |
| Architect: |
| Contractor: |
| Agent/Customer Name: |
| Tagging Instructions: |
| Special Instructions: |

PROJECT SCHEDULE

| Qty. | H | W | No. of Latches | Finish | Remarks |
|------|---|---|----------------|--------|---------|
| | | | | | |
| | | | | | |
| | | | | | |
| | | | | | |



Made with Union Labor



FOR MORE INFORMATION CALL 1-888-926-1365
 Superior Specialty Supply • 9 Council Drive • PO Box 417 • Woodsboro, MD 21798 • www.sssupply.com