



Member of Morris Group International™

## CABINETS DANA FIRE EXTINGUISHER CABINETS

Model/Series No.  
**7200  
SERIES**

DATA

### SPECIFICATIONS

#### BOX

Cold rolled steel with an electrostatically applied, thermally-fused polyester coating with recoatable white finish, and a concealed hinge.

#### DOOR AND FRAME

Model 7210-7225: **Steel** - Cold rolled steel with recoatable white polyester finish

Model 7230-7245: **Aluminum** - Clear anodized finish

Model 7250-7265: **Stainless Steel** - #304 Stainless steel with #4 finish

Model 7270-7285: **Brass** - Polished finish, clear polyester coated

### MODEL SELECTION

#### STEEL

- 7210 Recessed
- 7220 Recessed
- 7225 Recessed

#### ALUMINUM

- 7230 Recessed
- 7240 Recessed
- 7245 Recessed

#### STAINLESS STEEL

- 7250 Recessed
- 7260 Recessed
- 7265 Recessed

#### BRASS

- 7270 Recessed
- 7280 Recessed
- 7285 Recessed

### PRODUCT OPTIONS

#### DOOR STYLES:

- DV Duo-Vertical Panel w/ Tempered Safety Glass
- DVL Duo-Vertical Panel w/ Lock, TSG & Break Rite® Handle.
- F Solid Flush Metal
- FS Solid Flush Metal w/ lock

\*\*NOTE: ALL GLASS DOOR STYLES PROVIDED WITH CLEAR TEMPERED SAFETY GLASS IN COMPLIANCE WITH ANSI Z97-1-1984

#### GLAZING MATERIAL:

- 1 TS Bronze Tempered Safety Glass
- 2 TS Smoke Tempered Safety Glass
- 4 TS Obscure Tempered Safety Glass
- 5 1/4" Wire Inserted Glass
- 6 1/8" Clear Acrylic
- 7 1/8" Bronze Acrylic
- 8 1/8" White Acrylic
- 9 1/8" Smoke Acrylic
- 10 1/8" Red Acrylic



MODEL 7260 (Shown)

### PRODUCT OPTIONS (cont.)

#### DOOR AND FRAME FINISHES:

- STEEL: Any polyester paint color, if available; Provide mfg. name and color number
- ALUMINUM: Light, Medium or Dark duranodic
- STAINLESS STEEL: Number 304 Stainless, with #8 mirror finish
- BRONZE: U.S. # 10 Satin finish with clear coating, or dark oxidized, oil rubbed; specify
- RED: For Red Polyester Finish, Add This Suffix
- RR: For Rolled Radius Return, Add This Suffix
- CUSTOM \_\_\_\_\_

#### FIRE EXTINGUISHER LETTERING:

- HW Horizontal White
- HB Horizontal Black
- HR Horizontal Red
- VW Vertical White
- VB Vertical Black
- VR Vertical Red
- VAW Vertical Ascending White
- VAB Vertical Ascending Black
- VAR Vertical Ascending Red

Call Potter Roemer - Fire Pro for current listings and approvals. Dimensions are subject to manufacturer's tolerance and may change without notice. Potter Roemer - Fire Pro assumes no responsibility for use of void or superseded data. © Copyright Potter Roemer - Fire Pro, Member of Morris Group International™ Please visit [potterroemer.com](http://potterroemer.com) for most current specifications.

**7200 SERIES**

Date: 04/12/16

MEMBERSHIP



FIRE EQUIPMENT MANUFACTURERS' ASSOCIATION

**ONFSA**  
NATIONAL FIRE SPRINKLER ASSOCIATION

**POTTER ROEMER/FIRE PRO**




**FOR MORE INFORMATION CALL 1-888-926-1365**  
Superior Specialty Supply • 9 Council Drive • PO Box 417 • Woodsboro, MD 21798 • [www.sssupply.com](http://www.sssupply.com)



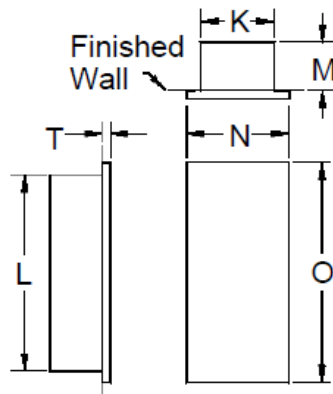
**CABINETS  
DANA FIRE EXTINGUISHER CABINETS**

Model/Series No.  
**7200  
SERIES**

**MODEL DIMENSIONS**

Model No.				Wall Mounting	Inside Box Dimensions			Overall Frame		Wall Opening Required			Trim	For Use With These Extinguishers	ADA 
Steel	Aluminum	Stainless Steel	Brass		K	L	M	N	O	W I D T H	H E I G H T	D E P T H			
7210	7230	7250	7270	Recessed	9	18	5-3/4	11-3/4	20-3/4	10	19	6	5/8	3002, 3005, 3005-3, 3302, 3305, 3305-3	Yes
7220	7240	7260	7280	Recessed	9	24	5-3/4	11-3/4	26-3/4	10	25	6	5/8	3302, 3305, 3305-3, 3306, 3010, 3302, 3305, 3305-3, 3306, 3310, 3405	Yes
7225	7245	7265	7285	Recessed	12	27	8	14-3/4	29-3/4	13	28	8-1/4	5/8	3002, 3305, 3305-3, 3062, 3010, 3020, 3202, 3302, 3305, 3305-3, 3306, 3310, 3320, 3405, 3410	Yes

ALL DIMENSIONS ARE IN INCHES UNLESS OTHERWISE NOTED



**RECESSED**

Call Potter Roemer - Fire Pro for current listings and approvals. Dimensions are subject to manufacturer's tolerance and may change without notice. Potter Roemer - Fire Pro assumes no responsibility for use of void or superceded data. © Copyright Potter Roemer - Fire Pro, Member of Morris Group International™ Please visit [potterroemer.com](http://potterroemer.com) for most current specifications.

**7200 SERIES**

Date: 04/12/16

**MEMBERSHIP**



FIRE EQUIPMENT MANUFACTURERS' ASSOCIATION

**ONFSA**  
NATIONAL FIRE SUPPLY ASSOCIATION

**POTTER ROEMER/FIRE PRO**



**FOR MORE INFORMATION CALL 1-888-926-1365**  
Superior Specialty Supply • 9 Council Drive • PO Box 417 • Woodsboro, MD 21798 • [www.sssupply.com](http://www.sssupply.com)