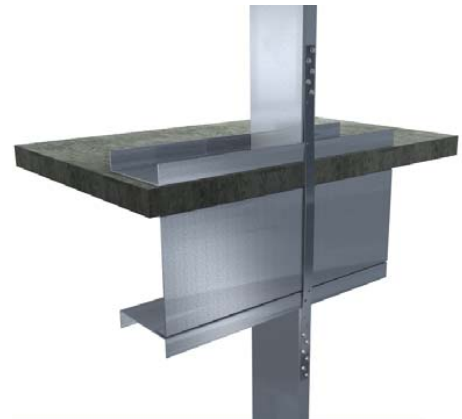
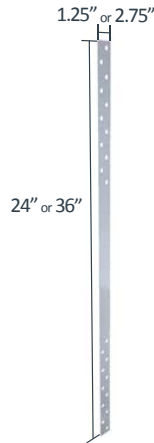


StiffClip® FS

Floor Strap

Material Composition

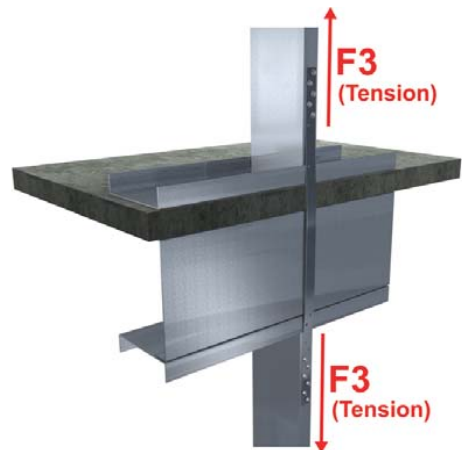
ASTM A1003/A1003M Structural Grade 50 (340) Type H, ST50H (ST340H): 50ksi (340MPa) minimum yield strength, 65ksi (450MPa) minimum tensile strength, with ASTM A653/A653M G90 (Z275) hot dipped galvanized coating.



StiffClip FS Allowable Loads

StiffClip® FS Recommended Allowable Load (lbs): F3	
Designation	Load
FS125-33	1,163
FS125-43	1,516
FS125-54	1,902
FS125-68	2,396
FS125-97	3,418
FS275-33	2,849
FS275-43	3,713
FS275-54	4,660
FS275-68	5,871
FS275-97	8,374

Load Direction



Notes:

- StiffClip FS resists tension forces only.
- Design loads based on strap capacity only.
- Allowable loads have not been increased for wind, seismic, or other factors.
- Number of fasteners used is based on fastener manufacturer's allowable load data.
- Guide holes located 1/2" from each end, with 3/8" edge distance at 2" o.c. staggered for FS125 and 3/4" edge distance at 2" o.c. staggered for FS275.

Nomenclature

StiffClip FS is designated by the width of the strap in inches followed by strap thickness in mils.

Example: 16ga, 2 3/4" strap, 24" long

Designate: StiffClip® FS275-54-24

* Additional guide holes for fasteners available upon request.

**StiffClip FS are typically made to order per project specifications.



FOR MORE INFORMATION CALL 1-888-926-1365
 Superior Specialty Supply • 9 Council Drive • PO Box 417 • Woodsboro, MD 21798 • www.sssupply.com