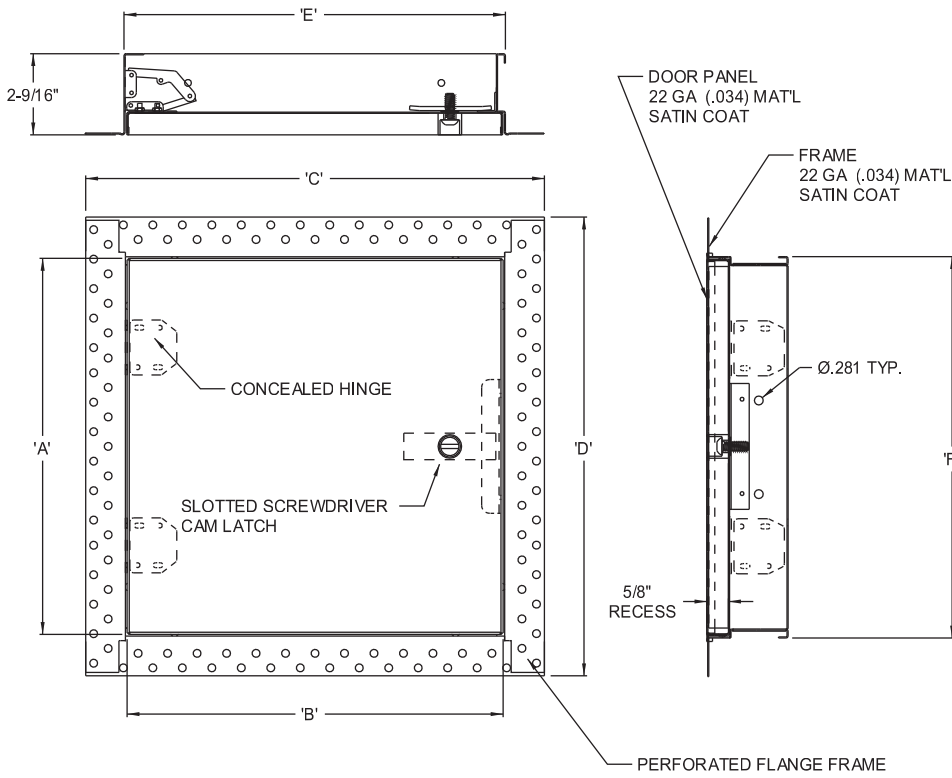




**DW-5015**

**RECESSED FOR DRYWALL**

QTY.	NOMINAL SIZE	A	B	C	D	E	F	LOCK
	12 x 12 (305 x 305)	11.87 (301)	11.87 (301)	14.48 (368)	14.48 (368)	12.04 (306)	12.04 (306)	1
	18 x 18 (457 x 457)	17.87 (454)	17.87 (454)	20.48 (520)	20.48 (520)	18.04 (458)	18.04 (458)	1
	24 x 24 (610 x 610)	23.87 (606)	23.87 (606)	26.48 (673)	26.48 (673)	24.04 (611)	24.04 (611)	1
	24 x 36 (610 x 914)	35.87 (911)	23.87 (606)	26.48 (673)	38.48 (977)	24.04 (611)	36.04 (915)	2



**STANDARD FEATURES:** SLOTTED SCREWDRIVER CAM LATCH  
5/8" RECESSED DOOR PANEL  
SATIN COAT STEEL, MILL FINISH

**OPTIONS:**

- LOCK TYPE**
- CYLINDER LOCK & KEY
  - ALLEN HEAD CAM LATCH
  - SPANNER HEAD CAM LATCH
  - OTHER

- MATERIAL**
- STAINLESS STEEL
  - OTHER

- FINISH**
- 304 2B MILL
  - OTHER

JOB NAME:  
CUSTOMER:

APPROVED BY:  
DATE:

*This document contains proprietary information which is the property of Acudor Products. It shall not be modified, copied, furnished, nor distributed (in whole or in part) without proper authorization. Copyright © 2020 Acudor Products.*



**FOR MORE INFORMATION CALL 1-888-926-1365**  
**Superior Specialty Supply • 9 Council Drive • PO Box 417 • Woodsboro, MD 21798 • www.sssupply.com**