



FW-5015

Fire Rated Access Door,
Recessed for Drywall walls

Application

- For installation in drywall walls requiring concealing of the door panel consistent to surroundings
- For use in walls, fire-rated for up to 90-minutes with a temperature rise of max 250°C (450°F) over 30 minutes

Product Features

- Recessed reinforced door fitted with 5/8" Fire-rated drywall.
- Concealed hinge & self-centering device ensures seamless appearance in walls
- Self-closing & self-latching door mechanism
- Perforated Frame ensures trouble-free application of skim coat to edge of the door
- Zinc coated steel provides superior corrosion resistance
- Testing standards UL 10(b) and ULC S104



PATENT PENDING

FW-5015 Access Door Specifications:

- Door:** Steel-22 Gauge recessed fitted with 5/8" thick drywall suitable to accept skim coat finish on site.
- Door Frame:** Steel-22 Gauge press bent for strength and rigidity with pre-punched flanges for convenient mounting and accepting skim coat finish on site
- Hinge:** Concealed
- Fire Rating (Walls):** Meets 1½ hour fire rating requirement in accordance with UL 10(b) and CAN/ULC S104-10 for max size upto 24" x 36"
- Latch:** Self-latching bolt, operated by flush key
- Finish:** Satin coat steel

FW-5015 STANDARD SIZES

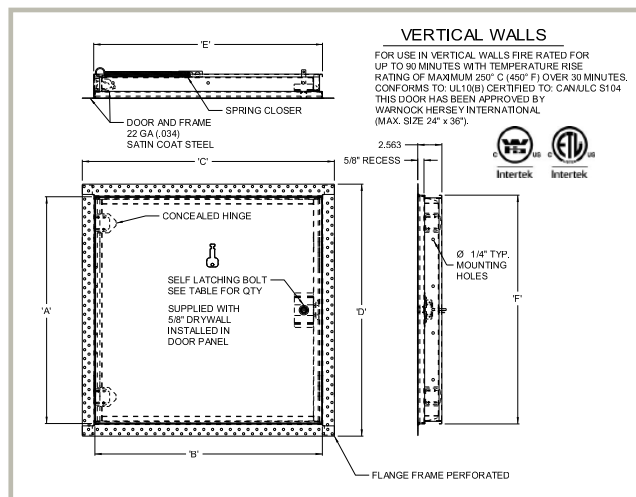
(other sizes available upon request)

Nominal Door Size W&H		Latches	Weight per Door	
Inches	mm		lbs.	kg.
12 X 12	305 X 305	1	8	3.6
16 X 16	406 X 406	1	13	5.9
18 X 18	457 X 457	1	16	7.3
24 X 24	610 X 610	2	25	11.3
24 X 36	610 X 914	2	40	18.1

Wall opening is W + 3/8" (9 mm)

For detailed specifications see submittal sheet

PATENT PENDING



This document contains proprietary information which is the property of Acudor Products. It shall not be modified, copied, furnished, nor distributed (in whole or in part) without proper authorization. Copyright © 2020 Acudor Products.



FOR MORE INFORMATION CALL 1-888-926-1365
 Superior Specialty Supply • 9 Council Drive • PO Box 417 • Woodsboro, MD 21798 • www.sssupply.com