

Direct Applied Finishes

Corner Bead

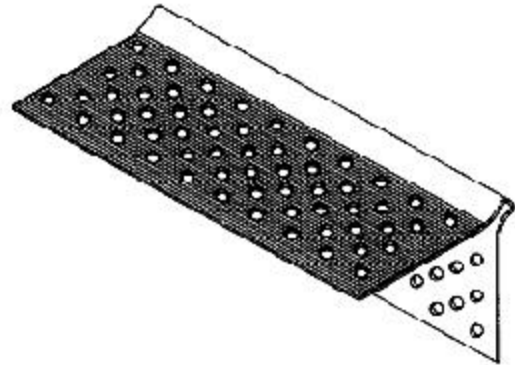
Product #	Dimensions	Descriptions	Pieces/Box
2209	1-1/2" x 1-1/2" flange and grooved.		100
8' & 10' Lengths			

● Application: 2209

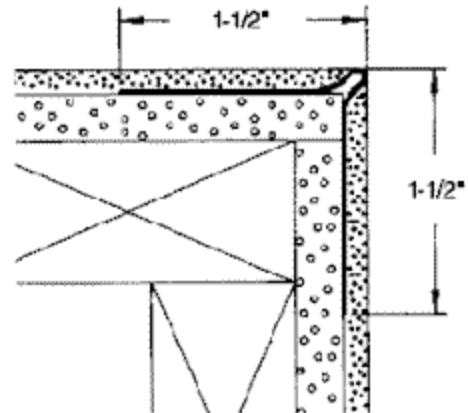
Designed with wide flanges to assure straight and rust-free corners while providing high impact resistant corners. Flange has striations and perforations to assure a positive bond of the base to the flange and the surface of the sheathing material.

● Specification:

Outside Corner Bead shall be Plastic Components, Inc. # 2209. All exterior accessories shall conform to ASTM standards D1784-92 and C1063-94. They shall be used where specified by the architect and installed per industry standards and manufacturer's instructions.



Note: Striations on exposed flanges.



Caulk all butt joints, intersections and ends.
It is recommended that PVC products be used for all exterior exposures.

