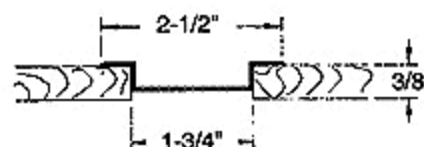
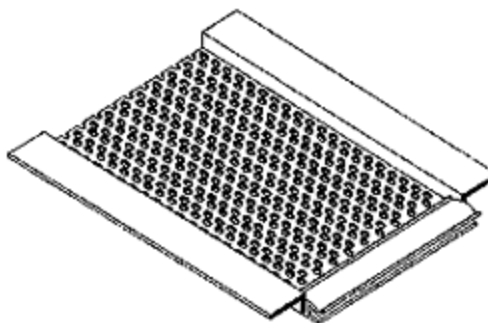


Stucco and Plaster

Soffit Vent

Product #	Ground	Dimensions/Descriptions	Pieces/Box
300	3/8"	Soffit vent - 2-5/8" vent area. Vent area - 15 square inches of free air flow per linear foot.	50
301	3/8"	Soffit vent - 1-3/4" vent area. Vent area- 7 square inches of free air flow per linear foot.	50
3300	3/8"	Soffit vent - 3" vent area. Vent area - 15 square inches of free air flow per linear foot.	35
4300	3/8"	Soffit vent - 4" vent area. Vent area - 16 square inches of free air flow per linear foot.	35
8' & 10' Lengths			



Application:

Used on soffits where 3/8" sheathing is being used. Excellent paint adhesion. Connector clips included. Will not rust or corrode.

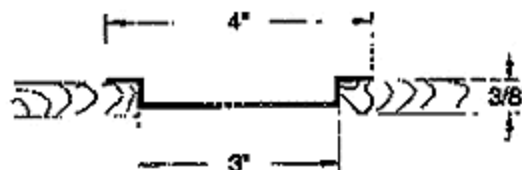
301

Specification:

Soffit Vents shall be Plastic Components, Inc. # _____. All exterior accessories shall be of PVC material conforming to ASTM standards D1784-92 and C1063-94. They shall be used where specified by the architect and installed per industry standards and manufacturer's instructions.



300



3300



4300

Caulk all butt joints, intersections and ends.
It is recommended that PVC products be used for all exterior exposures.

