

SUBMITTAL: FD2RF 2 HOUR FIRE-RATED ACCESS PANEL WITH RECESSED FLANGE

PAGE 1 OF 2

Recessed flange access panel for 2 hour wall or ceiling applications that require a trimless appearance. 5/8" deep concealed wraparound flange construction makes the frame extremely rigid.

Materials: Satin finish galvanized steel or 304 stainless steel.

Frame: 16 ga (1.61mm) up to and including 30" x 48" (762mm x 1219mm) or 14ga (1.99mm) for larger sizes. Depth 2-1/4" (57mm).

Flange: Concealed flange is recessed 5/8" to allow for wallboard installation on top. Flange is 1-1/4" (32 mm) W.

Door Panel: 18 ga (1.31mm), with a 22 ga (0.85mm) liner.

Insulation: The door panel contains 1-1/2" (38mm) of high temperature insulation material.

Finishes: Rust-inhibitive off-white prime coat or # 4 polished stainless steel finish on exterior surface.

Hinges: The concealed continuous rod hinge is designed to secure the door panel. The hinge is placed on the long side of the door ("H" dimension) unless otherwise requested. Sizes greater than 48" (1219mm) in a wall application are provided with a continuous piano hinge.

Panel Closer: The automatic panel closer will close and latch the door from an open position of approximately 90° as required by NFPA 80.

Latch: Flush mount 1/4" allen key (A). All fire-rated locks are self-latching and include an interior latch for sizes including and exceeding 406mm x 406mm (16"x 16"). Interior latch for smaller sizes is available as an option.

Sizes: Minimum size 8" x 8" (W x H). Maximum size for walls is 48" x 60", for ceilings is 36" x 36" or 30" x 48".



Intertek Warnock Hersey Listed and Labeled:
2 Hour Fire Rating for vertical and horizontal installation
Temp Rise Max: 139°C / 250° F at 30 Min 250° C / 450° F at 60 Min
Testing standards:
Vertical: NFPA 252, UL 10B, CAN/ULC S104
Horizontal: UBC 43-7, CAN/ULC S112

LATCH AND LOCK OPTIONS

Standard (A)
1/4" Allen Key



Optional Knurled Knob
(KK)



STEP 1: SELECT MODEL NUMBER AND QUANTITY ON CHART PAGE 2 OR ENTER CUSTOM SIZE BELOW

___ " Width x ___ " Height - **Rough opening is order size.**

Frame size is 1/4" less than ordering size.

STEP 2: SELECT WALL OR CEILING INSTALLATION

___ Wall (Model FD2RFW) ___ Ceiling (Model FD2RFC)

STEP 3: SELECT MATERIAL

___ Galvanized steel with off-white primer ___ Stainless steel with #4 finish on exterior surface.

STEP 4: SELECT OPTIONAL FEATURES AT ADDITIONAL COST

___ Continuous piano Hinge for under 48" panel.

___ (LR) Interior latch for sizes smaller than 16" x 16".

Single Latch:

___ Raised knurled knob KK

Dual Latch - Select One Option:

___ Top KK, Bottom KK ___ Top KK, Bottom A ___ Top A, Bottom KK



FD2RF™ IS A TRADEMARK OF ACPG

Distributor:	Quantity:
Contractor:	Approved By:
Model #:	Architect:
Project:	Date:

© 2021 Activar Construction Products Group, Inc.

3/9/2021



FOR MORE INFORMATION CALL 1-888-926-1365

Superior Specialty Supply • 9 Council Drive • PO Box 417 • Woodsboro, MD 21798 • www.sssupply.com

SUBMITTAL: FD2RF 2 HOUR FIRE-RATED ACCESS PANEL WITH RECESSED FLANGE

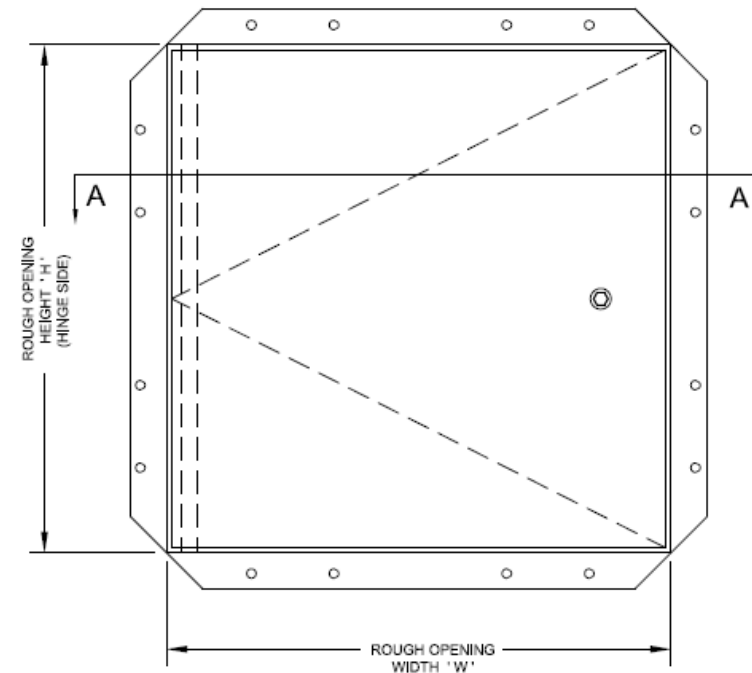
PAGE 2 OF 2

QTY	Rough Opening is Order Size W x H H = Hinge Side		No. of Latches/ Locks	Weight Kgs	Weight Lbs.
	Inches	Metric(mm)			
	2 HR WALLS OR CEILINGS				
	8 x 8	203 x 203	1	4	7
	10 x 10	254 x 254	1	5	9
	12 x 12	305 x 305	1	5	11
	14 x 14	356 x 356	1	7	14
	16 x 16	406 x 406	1	8	17
	18 x 18	457 x 457	1	10	20
	22 x 22	559 x 559	1	13	27
	22 x 30	559 x 762	1	16	34
	22 x 36	559 x 914	1	19	41
	24 x 24	610 x 610	1	14	30
	24 x 36	610 x 914	1	20	43
	30 x 30	762 x 762	1	20	43
	30 x 48	762 x 1219	2	30	66
	36 x 36	914 x 914	2	28	60
WALL SIZES ONLY BELOW					
	36 x 48	914 x 1219	2	35	77
	48 x 48	1219 x 1219	2	45	98
	48 x 60	1219 x 1524	2	56	122

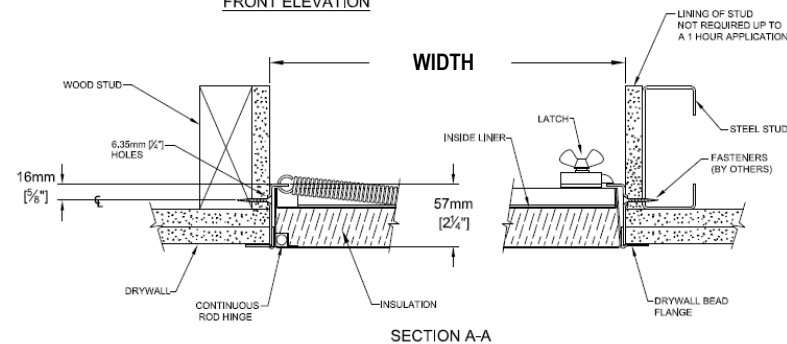
Clear Opening = Width minus 3-1/4" (83mm), Height minus 1-1/2" (39mm)

Other sizes available upon request for all Models.

Second dimension given is the hinge side (shown in red) unless otherwise specified.



FRONT ELEVATION



FOR MORE INFORMATION CALL 1-888-926-1365

Superior Specialty Supply • 9 Council Drive • PO Box 417 • Woodsboro, MD 21798 • www.sssupply.com