

## SUBMITTAL:FD2CT™—2 HOUR FIRE-RATED ACCESS PANEL W/RECESSED DOOR & FLANGE PG 1 OF 2

Access panel for 2 hour wall or ceiling applications that require a trimless appearance and a recessed door to accept tile or wallboard insert.

**Materials:** Satin finish galvanized steel or 304 stainless steel

**Frame:** 16 ga (1.61mm) steel. Depth 2-7/8" (73mm).

**Flange:** Concealed flange is recessed 5/8" to allow for wallboard installation on top. Flange is 1-1/4" (32 mm) wide.

**Door Panel:** 18 ga (1.31mm). Liner - 22 ga (0.85mm). Face of door is recessed 5/8" inch to accept tile or wallboard insert.

**Insulation:** The door panel contains 1-1/2" (38mm) of high temperature insulation material.

**Finishes:** Rust-inhibitive off-white prime coat or 2b mill finish stainless steel.

**Hinges:** The continuous piano hinge allows the door panel to open 175° for easy access. The hinge is placed on the long side of the door ("H" dimension) unless otherwise requested.

**Panel Closer:** The automatic panel closer will close and latch the door from an open position of approximately 90° as required by NFPA 80.

**Latch:** The standard factory installed latch is a flush mount 1/4" allen key. All fire-rated locks are self-latching and include an interior latch release mechanism allowing the doors to be opened from the inside. The interior latch release is standard on doors including and exceeding 406mm x 406mm (16"x 16"). Latch release for smaller sizes is optional. .

**Sizes:** Minimum size 12" x 12", Maximum size 24" x 36".



**Intertek Warnock Hersey Listed and Labeled:**  
2 Hour Fire Rating for vertical and horizontal installation  
Temp Rise Max: 139°C / 250° F at 30 Min 250° C / 450° F at 60 Min

**Testing Standards:**  
Vertical: NFPA 252, UL 10B, CAN/ULC S10 4  
Horizontal: UBC 43-7, CAN/ULC S112

Standard  
1/4" Allen Key  
Latch



### STEP 1: SELECT MODEL NUMBER AND QUANTITY ON CHART PAGE 2 OR ENTER CUSTOM SIZE BELOW

\_\_\_ " Width x \_\_\_ " Height - **Rough Opening is order size.**

Frame size is 1/4" less than ordering size.

### STEP 2: SELECT WALL OR CEILING INSTALLATION

\_\_\_ Wall (Model FD2CTW) \_\_\_ Ceiling (Model FD2CTC)

### STEP 3: SELECT FINISH


\_\_\_ Galvanized steel with off-white primer \_\_\_ Stainless steel with 2b finish

### OPTIONAL FEATURES AT ADDITIONAL COST

\_\_\_ Interior latch release for sizes under 16" x 16"

FOR OTHER FIRE-RATED MODELS SEE  
WALLBOARD BEAD MODEL FDWB

FOR OTHER RECESSED DOOR MOD-  
ELS SEE NON-RATED CT AND CTPW

 <p>FD2CT™ IS A TRADEMARK OF ACPG</p>	Distributor:	Quantity:
	Contractor:	Approved By:
	Model #:	Architect:
	Project:	Date: © 2021 Activar Construction Products Group, Inc.
3/11/2021		



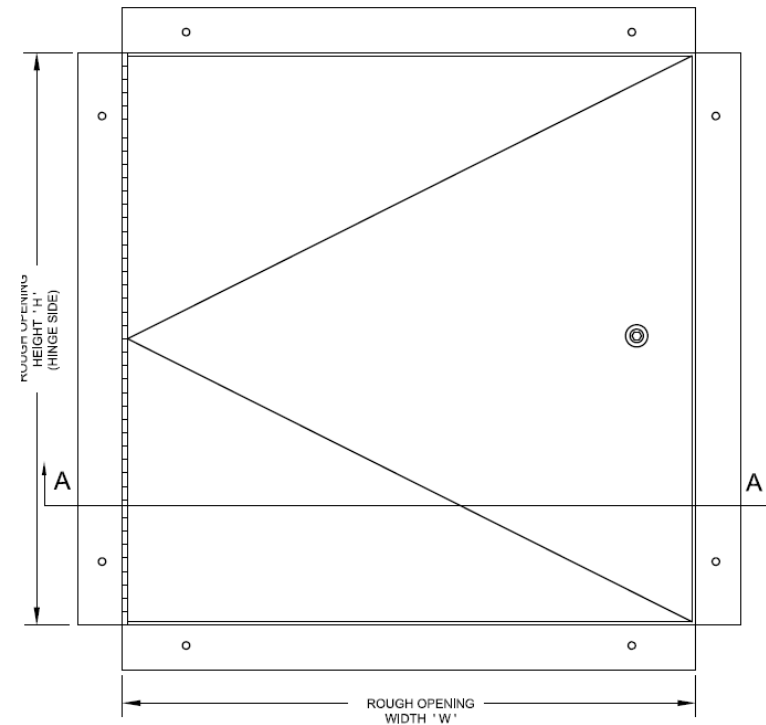
**FOR MORE INFORMATION CALL 1-888-926-1365**

Superior Specialty Supply • 9 Council Drive • PO Box 417 • Woodsboro, MD 21798 • [www.sssupply.com](http://www.sssupply.com)

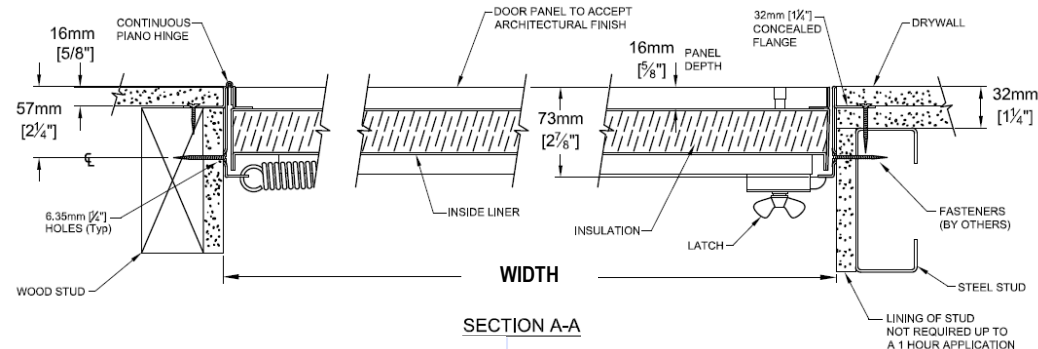
## SUBMITTAL: FD2CT SERIES FIRE-RATED ACCESS PANEL WITH RECESSED FLANGE

PAGE 2 OF 2

QTY	Rough Opening = Order Size W x H H = Hinge Side		No. of Latches/ Locks	Weight Kgs	Weight Lbs.
	Inches	Metric(mm)			
2 HR WALLS OR CEILINGS					
	12 x 12	305 x 305	1	5	11
	16 x 16	406 x 406	1	8	17
	18 x 18	457 x 457	1	10	22
	18 x 24	457 x 610	1	12	27
	22 x 30	559 x 762	1	16	35
	24 x 24	610 x 610	1	15	33
	24 x 30	610 x 762	1	18	39
	24 x 36	610 X 914	1	21	46
Clear Opening = W minus 1-1/2" (39mm) H minus 1-1/2" (39mm) Minimum size 12" x 12", Maximum size 24" x 36"					



Other sizes available upon request for all Models.  
Second dimension given is the hinge side (shown in red) unless otherwise specified.



FOR MORE INFORMATION CALL 1-888-926-1365

Superior Specialty Supply • 9 Council Drive • PO Box 417 • Woodsboro, MD 21798 • [www.sssupply.com](http://www.sssupply.com)